

Head west for luxury

Verse offers modern architecture and flexible floorplans in a part of booming Sunshine

LOCATED on the former Brimbank City Council municipal office site, Verse is the latest project from one of Melbourne's foremost property architects, Chamberlain Architects, well-known for their high-end, luxury residences.

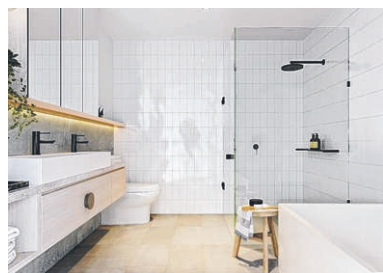
Culturally-diverse Sunshine, located in Melbourne's ever-evolving western pocket, is only 11km from the CBD and offers plenty to savvy house hunters and families.

The rare opportunity to move into their own family home complete with big backyard is an attainable dream at Verse.

Showcasing clever architecture with understated luxury, Verse offers a variety of flexible floorplans, with each home designed with its future occupants in mind.

Practical yet stylish defines the kitchen space, whether experimenting with something new, preparing an old favourite or putting your feet up with a cup of tea, sleek Miele appliances, marble benchtops and modern feature lights ensure the task is an enjoyable one.

Dual aspect windows allow natural



light to occupy the rooms, while allowing for maximum cross ventilation.

The kitchen flows to the living spaces and through to balcony and garden areas which are idyllic outdoor havens for ground-floor residences.

Each home is thoughtfully equipped with a quaint balcony so no resident misses out on taking in the surrounding vistas.

The facade is just as attractive as the inside. A monochrome palette with



metal accents teams artfully with timber cladding and results in a design which is modern yet timeless.

At the front, plentiful courtyard spaces are ornate with luxuriant greenery, providing a delightful welcome to the homes that lie behind.

Verse adds to the local aesthetic by

honouring the predominantly suburban context of Wilkinson Rd — marking the streetscape with a sophisticated presence.

Verse is just a short walk from Sunshine Plaza, Sunshine Marketplace, K Wheelahan Gardens, and Sunshine train station.

Leisure seekers and active families will love the parks and reserves, while highly regarded schools and accessible public transport confirms Sunshine

as a rapidly emerging hot spot.

All off-plan buying benefits apply, including massive stamp duty savings.

Two-bedroom designs are priced from \$599,000, three-bedroom layouts are from \$755,000 and four-bedroom homes are from \$805,000.

Verse is located at 18 Wilkinson Rd, Sunshine. For more information, call Ranko on 0451 153 833 or see versesunshine.com.au



VERSE ◆ Sunshine Townhomes



Register your interest

For more information, contact Ranko – 0451 153 833
versesunshine.com.au
 18–28 Wilkinson Road, Sunshine

2, 3, or 4 bed family homes from \$599,000

Verse offers spacious family homes designed by Chamberlain Architects, with generous outdoor spaces and luxury finishes. Located in Sunshine, where lifestyle and culture abound within close reach of the city.

Huge living spaces

Spacious, family homes

Flexible floor plans

Luxury appliances and finishes

Big backyards